

Kew Labs UTS-2 Invisible Wireless Charging Quick Guide

PRODUCT DATA SHEET APPROVED

WIRELESS CHARGER UTS-2 & UTS-2-6MM

Kew Labs UTS-2 invisible wireless chargers are designed to be installed under non-metallic materials and turn any surface into a hidden wireless phone charger.

The **UTS-2** invisible wireless charger (**SKU: UTS-2 and UTS-2-6MM**) have been tested and approved for use with Neolith.

Recommended installation areas with Neolith materials include:

KITCHEN COUNTERTOPS.

KITCHEN ISLANDS.

FURNITURE

BARS AND CATERING.

PRODUCT FEATURES

The concealed phone charging system keeps surfaces tidy and preserves the aesthetics of the space.

Can be attached directly to Neolith 6mm & 12mm surfaces (see specification: effective load distance). Thicker surfaces (20mm) will need to be rebated through a notch.

Compatible with all wireless charging enabled phones and accessories including iPhones with MagSafe and AirPods.

Apple™ 7.5W and Samsung™ (9W) fast charging protocols

Patented Intelligent Power Communication™ (IPCT™) technology.

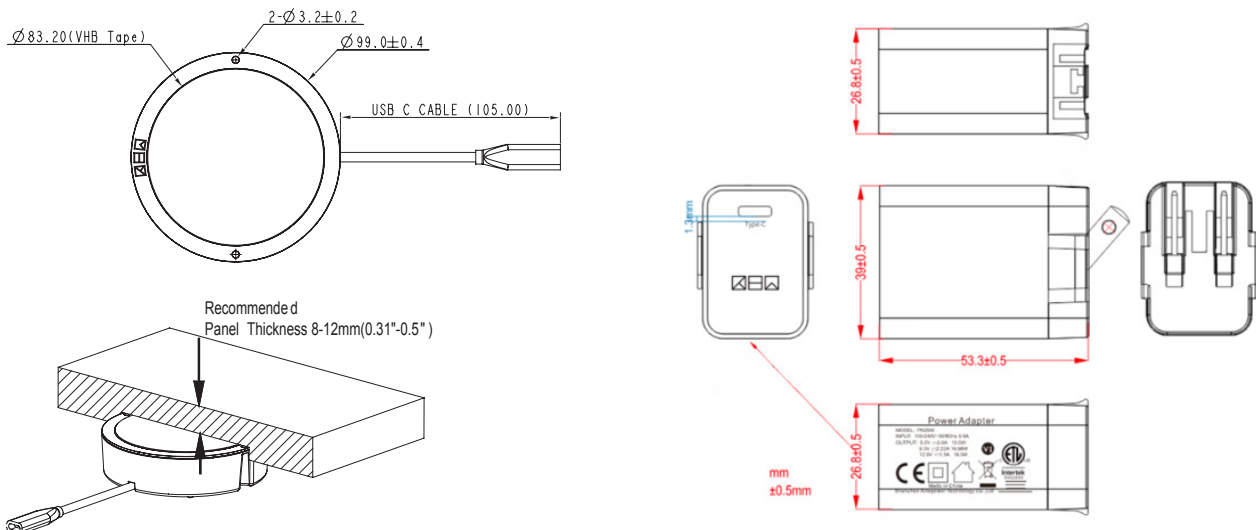
Product dimensions: ø99mm x 26mm (3.89' x 1.02")

SPECIFICATIONS

Article	UTS-2 Specifications	
Product SKU and variations	Model Name	Description
	UTS-2-US	w/ US plug
	UTS-2-EU	w/ EU plug
	UTS-2-AUS	w/ AUS plug
	UTS-2-UK	w/ UK plug
	UTS-2-6MM Specifications	
	UTS-2-6MM-US	For 6mm thickness - w/ US plug
	UTS-2-6MM-EU	For 6mm thickness - w/ EU plug
UTS-2-6MM-AUS	For 6mm thickness - w/ AUS plug	
UTS-2-6MM-UK	For 6mm thickness - w/ UK plug	
Input power	DC 12V/2A	
Power output	Max 20W	
Standby power consumption	0.35W	
Charges	Apple 7.5W, Samsung 10W, Standard 5W Qi wireless charging	
Material compatibility	All Neolith surfaces.	
Device compatibility	All devices with Qi wireless charging.	
Unit size / weight	ø99cm – (3.9") / 197g (6.95 oz)	
Effective load distance	Model	Load Distance
	UTS-2	8mm-12mm (0.31" – 0.47") – to ensure universal compatibility. Does not work below 8mm
	UTS-2-6MM	6mm (0.24") only. Does not work above or below 6mm.
Frequency	123K-185KHz	
Accessories	Multi-design charging position sticker, USB-C er 12V/2A adapter, USB-C cable (1.5m 4'11"), cable management clips, screws, double-sided tape (prefixed), alignment tool.	
Method of attachment	3M double-sided adhesive tape - screws (supplied)	
Protection	OPP – Overpower Protection OTP – Over temperature Protection OVP -Over Voltage Protection UVP – Under Voltage Protection FOD – Foreign Object Detection	
Certifications	FCC, CE, IC	

* See www.kewlabstech.com/uts-1install for complete product and adapter specifications.

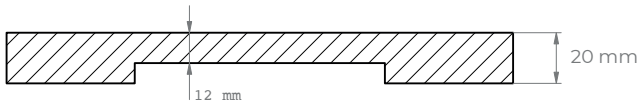
PRODUCT DATA SHEET APPROVED



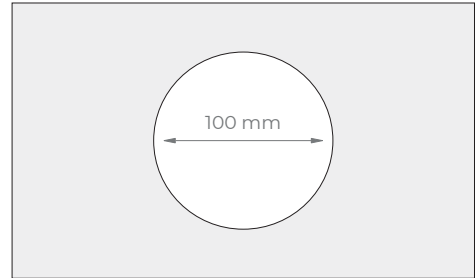
INSTALLATION REQUIREMENTS AND TIPS

Installation with material undercut

For Neolith 20 mm it is recommended to make a recess to achieve the 12 mm distance and install the UTS-2 charger.



Aperature size



DESIGN TIPS

Ventilation distances

Wireless charging naturally produces a small amount of heat in both the phone and the charger. Do not directly cover the ventilation grille of the UTS-2 unit and leave a clearance of at least 25mm (1")

Proximity to heat sources

The UTS-2 loader and the recess must not be located within 200 mm (6") of heat sources such as hotplates, frying pans, frying pans, ...

Check that the installation area is within 1.5 m (4' 11") of the power outlet.

Protection against water

The UTS-2 charger is not waterproof, so it should be placed with appropriate protection or at some distance from wet areas or water sources such as sinks.

High temperatures

High ambient or room temperatures affect wireless charging performance. Avoid charging the cell phone in direct sunlight or in temperatures above 30°C (86°F).

The UTS-2 is designed to recognize and react to temperature changes that may occur after very long charging periods of 3 hours or more. In these cases, the charger may enter standby mode to allow the device to cool down until the device requests more power. This feature ensures better battery health and longevity of your phone.

INSTALLATION AND CONFIGURATION HELP

Verify that the charger is configured correctly.

Ensure that the UTS-2 is attached to the surface at the correct thickness and flush with the underside of the surface.

Follow the instructions on the alignment tool until the LED blinking sequence appears and attach charging indicator sticker. Do not discard alignment tool.

Phone placement advice

Align the center of the phone with the charging indicator.

Reconnecting the phone

It may take 2 to 3 seconds for the phone to connect once it is placed in the charger. Do not move the phone immediately if it does not connect when placed in the charger.

Daisy chaining multiple chargers together

USB-C power hubs can be used to connect multiple UTS-2 together. Please ensure each port has a minimum 12V 1.67A (20W) output. For further guidance, please contact Kew Labs directly.

For purchase or installation inquiries

Contact Kew Labs at info@kewlabstech.com.
Distributor portal registration: www.kewlabstech.com/register.

For technical and after-sales product support

Contact us at support@kewlabstech.com.

For frequently asked questions and product news:

Visit our website www.kewlabstech.com.

INSTALLATION VIDEO GUIDE



To watch the installation guide, please scan the QR code below or visit

www.kewlabstech.com/uts-2install

Installation video QR link

DISCLAIMER:

The UTS-2 Invisible Wireless Charger is developed and manufactured by Kew Labs, therefore any liability and warranty related to the equipment is the sole responsibility of the manufacturer.

Any electrical installation must be done in accordance with local codes and regulations. Neolith is not responsible for any damage, loss or injury associated with the installation and/or use of the UTS-2 Invisible Wireless Charger with Neolith Surfaces.

Neolith is not affiliated in any way with Kew Labs.